



Modular BOX PALLET 3 to 6 sides

STANDARD
PREMIUM



**Reverse
Logistics**



From 864L to 1033L



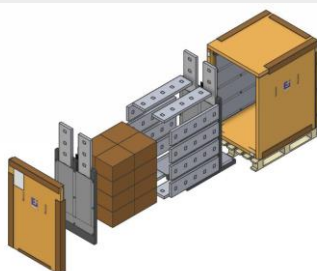
COOL +2°C/+8°C

TEMPERATE +15°C/+25°C

Benefits

- High Performance shipping system with 3, 4, 5 or 6 cooling elements faces
- Qualified for AWB 2°C-8°C or 15°C -25°C
- Easy to prepare: sleeves of Phase Change Material (PCM) or water gel briquettes
- Lightweight, robust and easily assembled and dismantled (less than 6 minutes)
- Reducing your transport and storage costs thanks to its light weight and the ability to fold it flat
- Identical briquettes sleeves for all product sizes
- Optimal interior volume
- Easy handling and Easy to reuse
- Flatpackable
- Reusable in the Reuse and Reverse EMBALL'ISO network

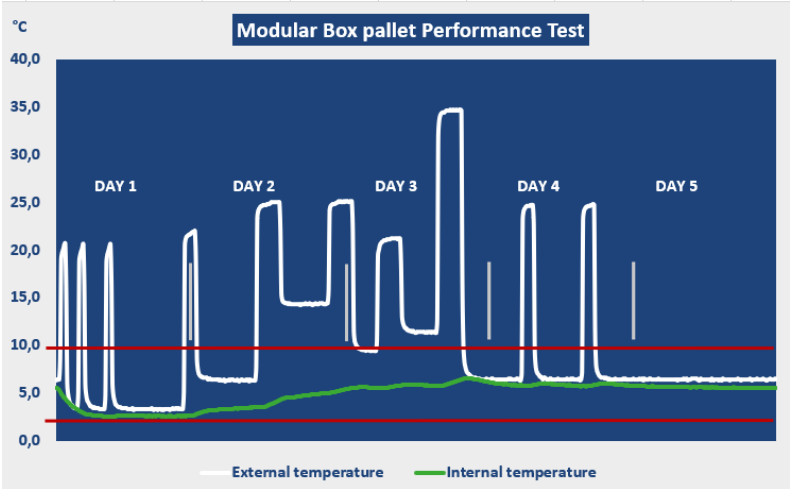
Standard sizes



Product name	Payload	Internal space L x W x H	External dimensions L x W x H	Volumetric weight	System weight		
					STANDARD (water) Cool / Temperate	PREMIUM (PCM) Cool	PREMIUM (PCM) Temperate
Modular BP 3 sides	1033 L	1 077 x 768 x 1 249 mm 42.4 x 30.2 x 49.2 in	1 200 x 1 000 x 1 576 mm 47.2 x 39.4 x 62 in	316 kg 695 lb	104 kg 230 lb		92 kg 203 lb
Modular BP 6 sides	864 L	949 X 768 X 1 186 mm 37.4 x 30.2 x 46.7 in	1 200 x 1 000 x 1 576 mm 47.2 x 39.4 x 62 in	316 kg 695 lb		124 kg 273 lb	

Validated range

- Validated for exterior temperatures of between -20°C and 60°C
- Qualified by our design according to demanding profiles reproducing real transport conditions
- Extensive qualification data available upon request



Non contractual photo: the color of XPS may vary depending on the manufacturing site.

Services

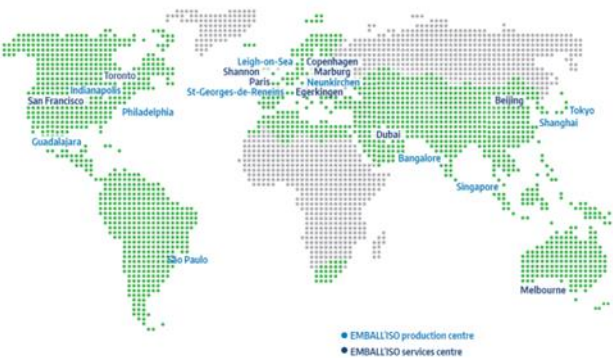
- Return/Re-use option available for decontamination, refurbishment, quality control, and reuse
- Ready-to-Use option available for preconditioning and packaging placement
- Packaging study to optimize your fulfillment using 3D software
- Detailed packaging instructions
- On-site or online training
- Formulation of procedures/SOPs
- Process qualification

About EMBALL'ISO

A world leader in the design and manufacture of high-performance temperature-controlled packaging systems for the transport of pharmaceutical products, EMBALL'ISO is now an expert in turnkey Reverse Logistics and Rental solutions.

EMBALL'ISO's worldwide presence across 4 continents, with more than 10 production sites (Brazil, China, France, Germany, India, Japan, Mexico, Singapore, UK, US...) and collection points in more than 80 countries helps you reuse isothermal packaging saving you time and money while complying with your sustainability initiatives.

EMBALL'ISO GLOBAL NETWORK



**MAKE YOUR
COLD CHAIN
EFFECTIVE**

EMBALL'ISO
320 Rue de l'avenir - 69830 Saint Georges de Reneins – France
info@emballiso.com www.emballiso.com
Certified ISO 9001:2015 Quality Management