



# MODULAR BOX PALLET



CARGO SHIPMENT



REUSABLE  
PACKAGING

STANDARD

PREMIUM

## DURATION

Up to 120h

## PAYLOAD

732 L , 864 L, 1 033 L

## TEMPERATURE RANGE

Cool +2°C/+8°C  
Temperate +15°C/+25°C

### Key benefits

- A **modular and performant** shipping solution that guarantees precise temperature control across the entire supply chain with 3, 4, 5, or 6 cooling faces
- Fully certified under **AWB 2°C–8°C** and **AWB 15°C–25°C** transportation
- **Lightweight and robust** : can be assembled or disassembled in under 5 minutes
- **Fast and simple** preparation with phase change material (PCM) or watergel briquette sleeves
- **Space- and cost-efficient** : flat-pack design minimizes storage and transportation expenses
- **Reusable** box pallet, collected and managed through the EMBALL'ISO Reuse and Reverse Network
- **Eco-friendly** : the lightweight design helps lower CO<sub>2</sub> emissions and minimize environmental impact
- **User-friendly** and consistent design for easy handling

“Modular Box Pallet: maximum thermal protection, minimal logistics costs. A reusable, flat packable cold chain solution for every shipment.”

Product name	Payload	Internal space L x W x H	External dimensions L x W x H	Volumetric weight	System weight		
					STANDARD (water) Cool / Temperate	PREMIUM (PCM) Cool	PREMIUM (PCM) Temperate
Modular BP 3 sides	732 L	1076 x 768 x 887 mm 42.4 x 30.2 x 34.9 in	1 205 x 1006 x 1184 mm 47.4 x 39.6 x 46.6 in	240 kg 528 lbs	76 kg 168 lb		
Modular BP 3 sides	1033 L	1 077 x 768 x 1 249 mm 42.4 x 30.2 x 49.2 in	1 200 x 1 000 x 1 576 mm 47.2 x 39.4 x 62 in	316 kg 695 lb	104 kg 230 lb		92 kg 203 lb
Modular BP 6 sides	864 L	949 X 768 X 1 186 mm 37.4 x 30.2 x 46.7 in	1 200 x 1 000 x 1 576 mm 47.2 x 39.4 x 62 in	316 kg 695 lb		124 kg 273 lb	



EMBALL'ISO

320 Rue de l'Avenir  
69830 ST GEORGES DE RENEINS  
info@emballiso.com  
Certified ISO 9001 V2015

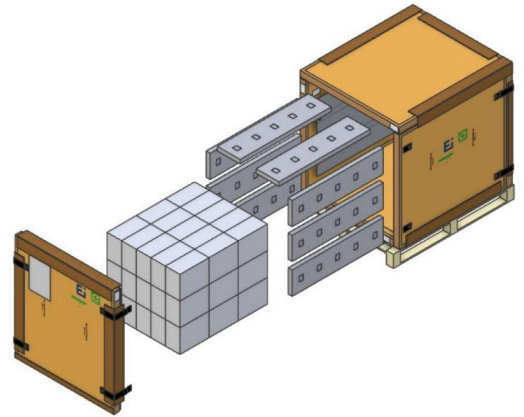
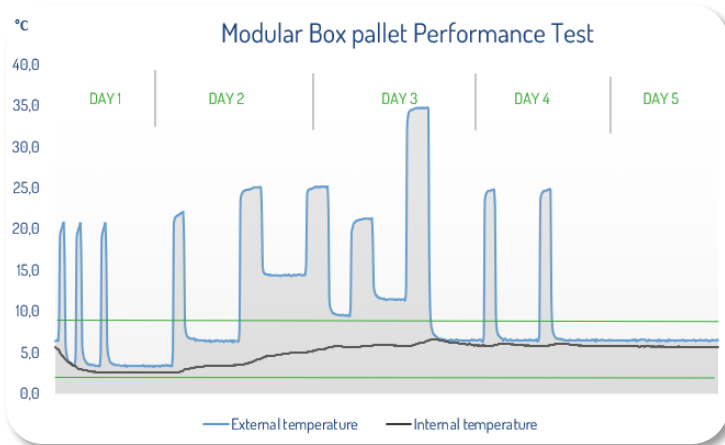
Global Cold Chain  
Local Expertise  
Sustainable Solutions

EMBALLISO.COM



## Validated range

- Validated for exterior temperatures of between -20°C and 60°C
- Qualified by our design according to demanding profiles reproducing real transport conditions
- Extensive qualification data available upon request



## Services

- **Free global collection** : enjoy hassle-free returns through our Reuse & Reverse Global Network—at no extra cost
- **Zero Waste Management** : no disposal required. We take care of everything
- **Ready-to-Use Packaging** : receive pre-conditioned insulated packaging at your desired temperature, exactly when you need it
- **Training that fits your needs** : choose between onsite or online sessions to empower your team
- **Clear preparation instructions** : step-by-step guides make packing fast and foolproof
- **Tailored packaging studies** : we analyze and optimize your shipments for maximum efficiency and reliability

## Who we are ?

- EMBALL'ISO is a global leader in **high-performance passive isothermal packaging for pharmaceutical transport**, pioneering sustainability through **Reuse and Reverse logistics** for a circular cold chain.
- Clients benefit from our **in-house laboratory expertise and advanced technologies**, including AI-based modeling for thermal performance, environmental stress testing, predictive analytics for risk mitigation, and real-time tracking to ensure shipment integrity throughout the supply chain.
- With **12 production sites on four continents and collection points in 80+ countries**, EMBALL'ISO delivers fast, compliant, and sustainable cold chain solutions through a global network that enables the **recovery and reuse of isothermal packaging**.



### EMBALL'ISO

320 Rue de l'Avenir  
69830 ST GEORGES DE RENEINS  
info@emballiso.com  
Certified ISO 9001 V2015

